

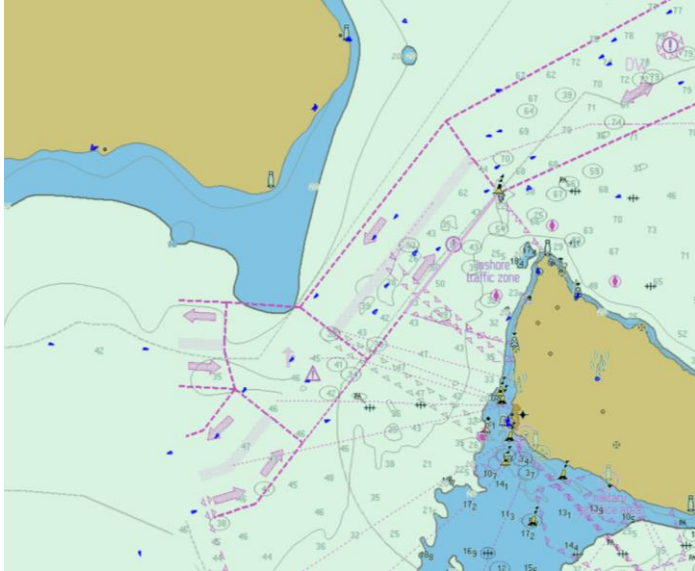


S-100 Implementation in Sweden

Agenda item BSHC-30 C.5

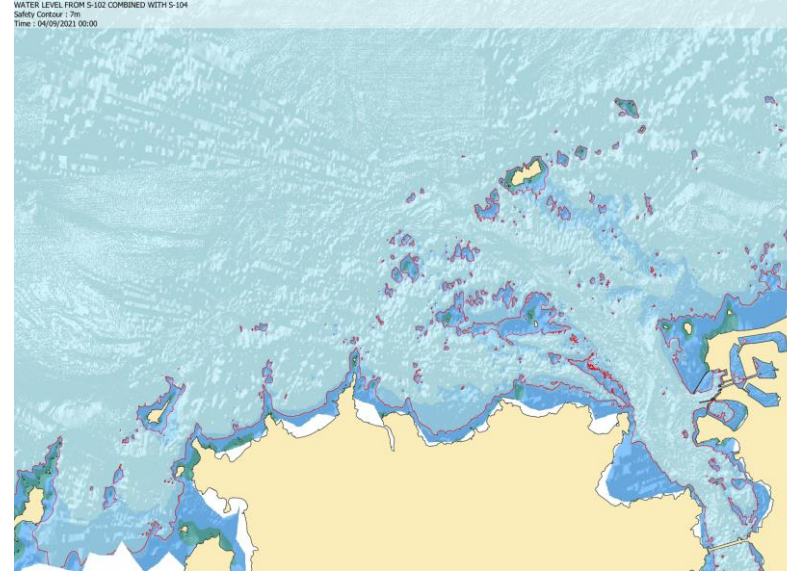
BSHC-30, Riga Latvia, 23 – 24 September 2025

The first priority S-100 products in Sweden



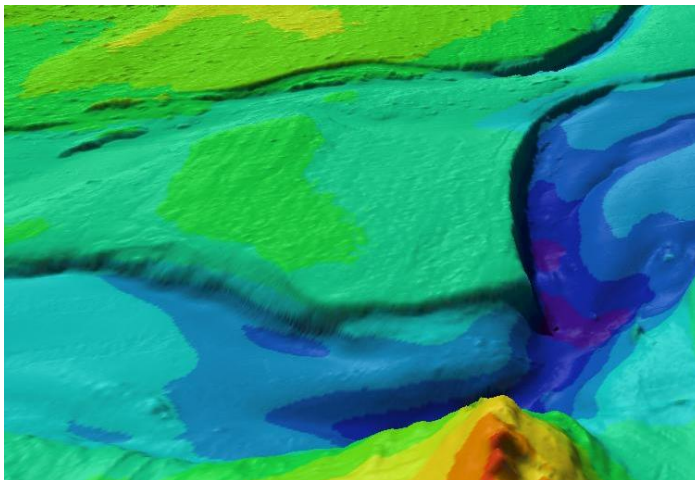
ENC S-101

to establish the S-100 base layer so SE ENCs can be interoperable with other S-100 layers



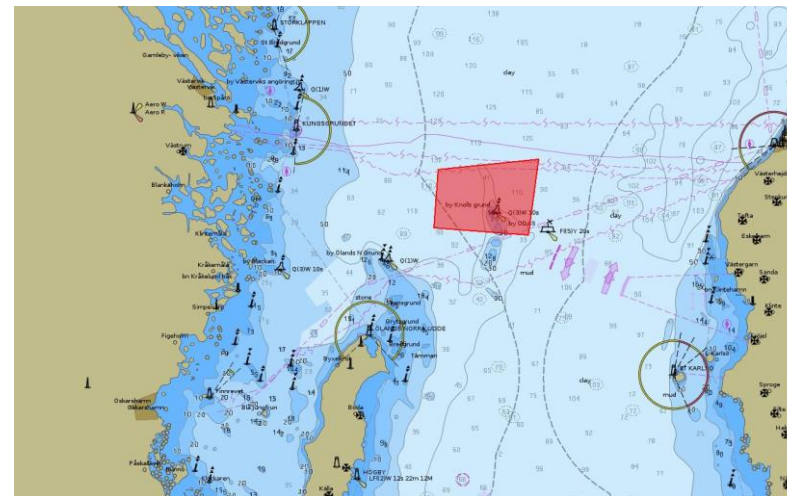
Water Level S-104

to provide Water Level Adjustment in navigational systems



Bathymetry S-102

to facilitate generation of unique safety contours



Navigational Warnings S-124

to fulfil the MSI requirements in S-100

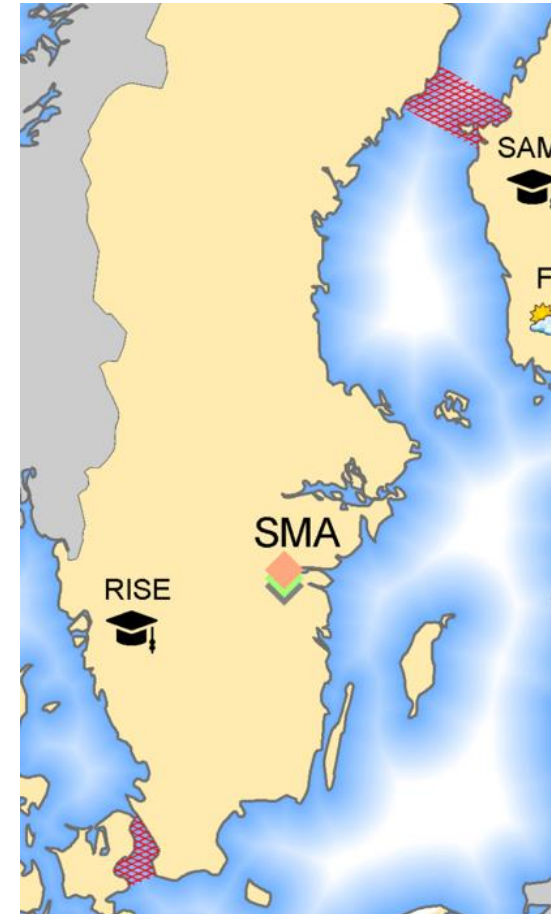
S-100 timeline in Sweden

Products	2024	2025	2026	2027	2028	2029	2030	2031	2032
ENC S-101									
Bathymetry S-102									
Ensuring confidentiality rules for S-102									
Catalogue of Nautical Products S-128 via PRIMAR									
Water Level S-104 (in cooperation with SMHI*)									
Surface Currents S-111 (in cooperation with SMHI*)									
Navigational Warnings S-124									
Marine Protected Areas S-122 (in cooperation with SwAM*)									
Marine Radio Services S-123									
Marine Traffic Management S-127									
Marine Harbour Infrastructure S-131									

*SMHI – Swedish Meteorological and Hydrological Institute, SwAM – Swedish Agency Marine and Water Management

Status August 2025

- First ENC S-101 (ed 2.0.0) and Bathymetry S-102 (ed 3.0.0) were produced in Feb – Mar for the Baltic Sea e-Nav tests.
- The first S-102 data were produced in 2 m resolution, but after lessons learned from the first Baltic Sea e-Nav tests SMA will change to 4 and 8 m resolution for the second Baltic Sea e-Nav tests.
- Migration from S-57 to S-101 data model of the CARIS HPD Chart Database is slightly delayed, but is planned to October 2025. S-101, S-57, paper charts and other chart products can then be produced from the Chart Database.
- Full coverage of S-101 ENCs, equivalent to current S-57 coverage, should be available late 2026.
- S-102 coverage in main harbours and passages 2026.
- SMHI has initiated work to refine their oceanographic model to be capable to produce water level S-104 and surface currents S-111.



Other relevant S-100 products still outside the timeline

- Status AtoN, S-125. An S-201 (IALA) compatible AtoN database will be developed at SMA to secure a future workflow to ENC's S-101 and possibly S-125
- Ice Information, S-411 (WMO), in cooperation with SMHI
- Weather and Wave Hazards, S-412 (WMO), in cooperation with SMHI
- Weather and Wave Conditions, S-413 (WMO), in cooperation with SMHI
- Weather and Wave Observations, S-414 (WMO), in cooperation with SMHI
- Route Plans, S-421 (IEC). Pilot routes, Ice routes, etc.
- S-212 (IALA), VTS Digital Service?
- Others?

It is expected that UKC Management S-129 will be made available through the commercial market.

Strategies for implementation

- Participation in relevant IHO working groups and also IMO and IALA.
- S-100 national seminar October 2024. Participants: Navy, SMHI, SwAM (Havs- och Vattenmyndigheten), Swedish Transport Administration (Trafikverket), Swedish Transport Agency (Transportstyrelsen), The Swedish Mapping and Cadastral Authority (Lantmäteriet), PRIMAR, Swedish Shipowners' Association and Ports of Sweden.
- Proposal to establish a National S-100 Council under the Swedish Geodata Agency Board.
- Coordinate implementation in the RHCs
- EU funding through Baltic Sea e-Nav and future EU funded projects



Questions or comments?

BSHC-30, Riga Latvia, 23 – 24 September 2025